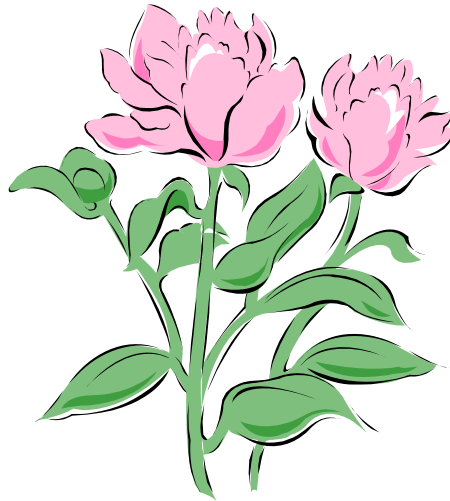


Parts of a Plant Packet

- Parts of a Plant Notes
- Parts of a Plant Notes Key
- Parts of a Plant Labeling Practice



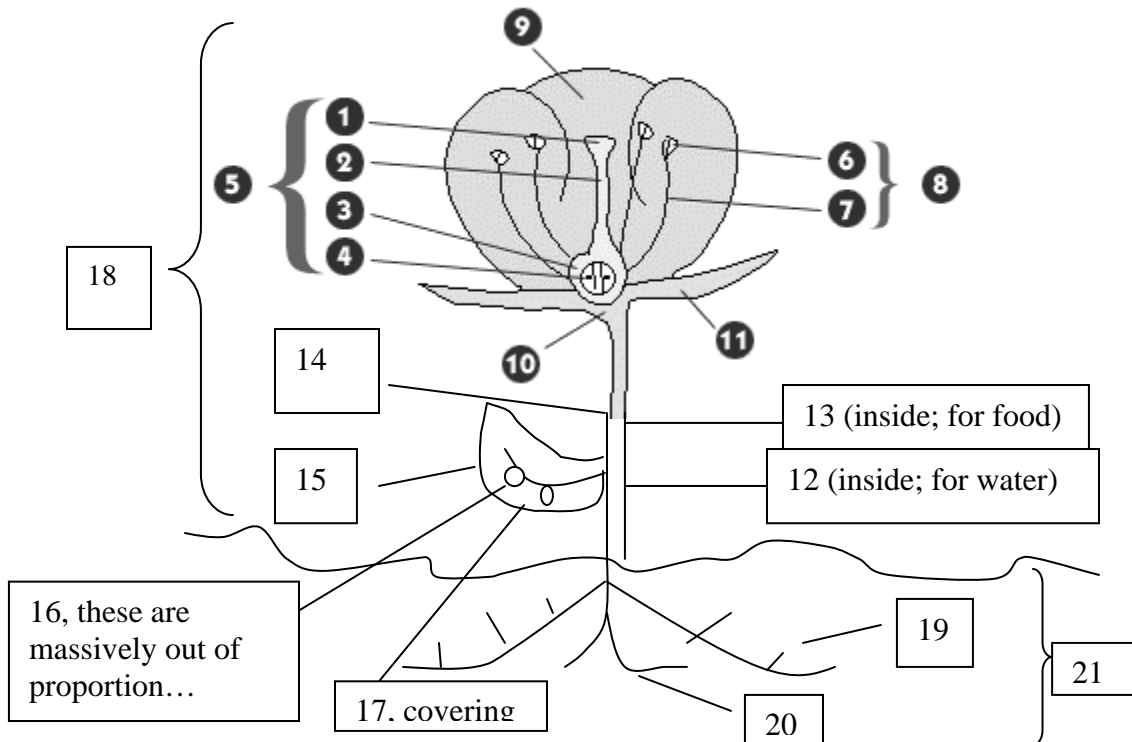
Includes Vocabulary:

Stigma
Style
Ovary
Ovule
Pistil
Anther
Filament

Stamen
Petal
Receptacle
Sepal
Xylem
Phloem
Stem

Leaf
Stoma
Cuticle
Shoot System
Root Hairs
Roots
Root System

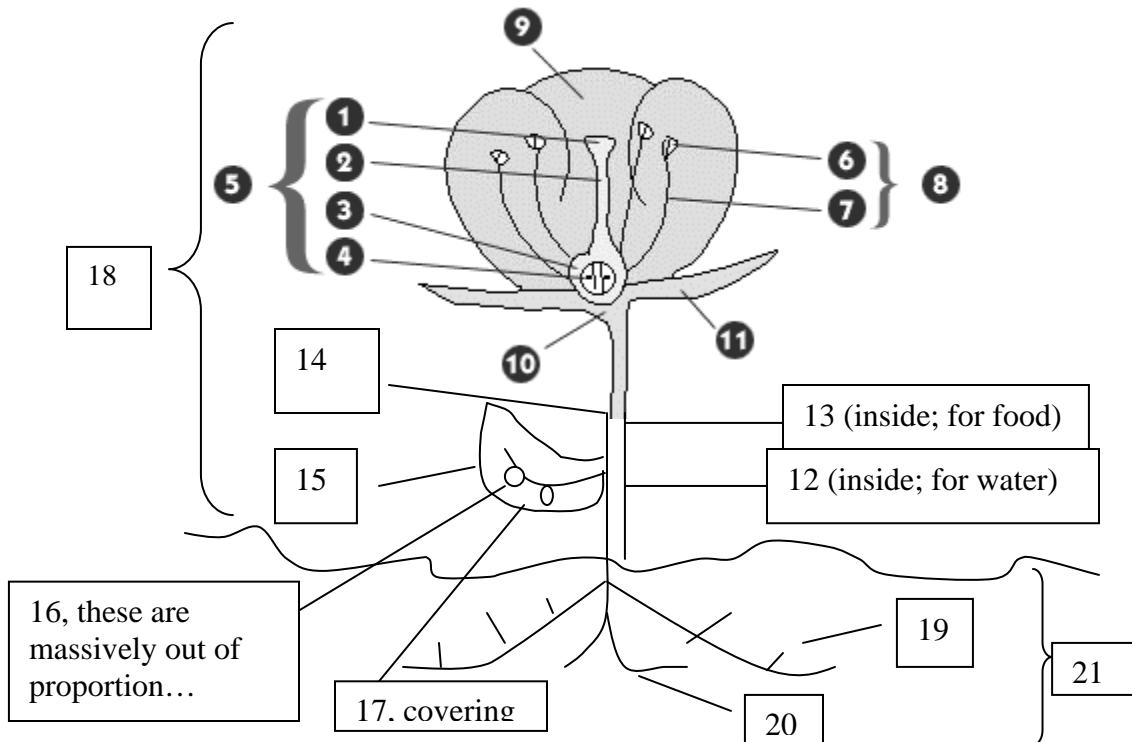
Parts of a Plant Notes



Picture modified from <http://www.urbanext.uiuc.edu/gpe/index.html>

1. _____ - sticky part of the pistil that pollen sticks to
2. _____ - long outgrowth of the ovary that collects pollen from the stamens
3. _____ - base part of the pistil that holds the ovules
4. _____ - unfertilized seed of the plant
5. _____ - female part of the flower that contains the stigma, style, ovary and ovules.
6. _____ - part of the flower that holds the pollen
7. _____ - long thread-like part of the flower that holds the anthers out so insects can get to the pollen.
8. _____ - male part of the flower that contains the anther and the filament.
9. _____ - colorful part of the flower that protects the flower and attracts insects and other pollinators.
10. _____ - stalk that bears the flower parts
11. _____ - part that covers the outside of a flower bud to protect the flower before it opens
12. _____ - transports water.
13. _____ - transports food
14. _____ - transport and support for the plant.
15. _____ - cells of this perform photosynthesis.
16. _____ - holes in the leaf which allow CO₂ in and O₂ and H₂O out.
17. _____ - waxy covering which prevents gas exchange at any place except the stoma.
18. _____ - includes the flower, leaves, and stem. It is involved in reproduction, photosynthesis, gas exchange, and transport.
19. _____ - increase the surface area of the roots.
20. _____ - anchor the plant and absorb water and nutrients.
21. _____ - includes the roots and root hairs.

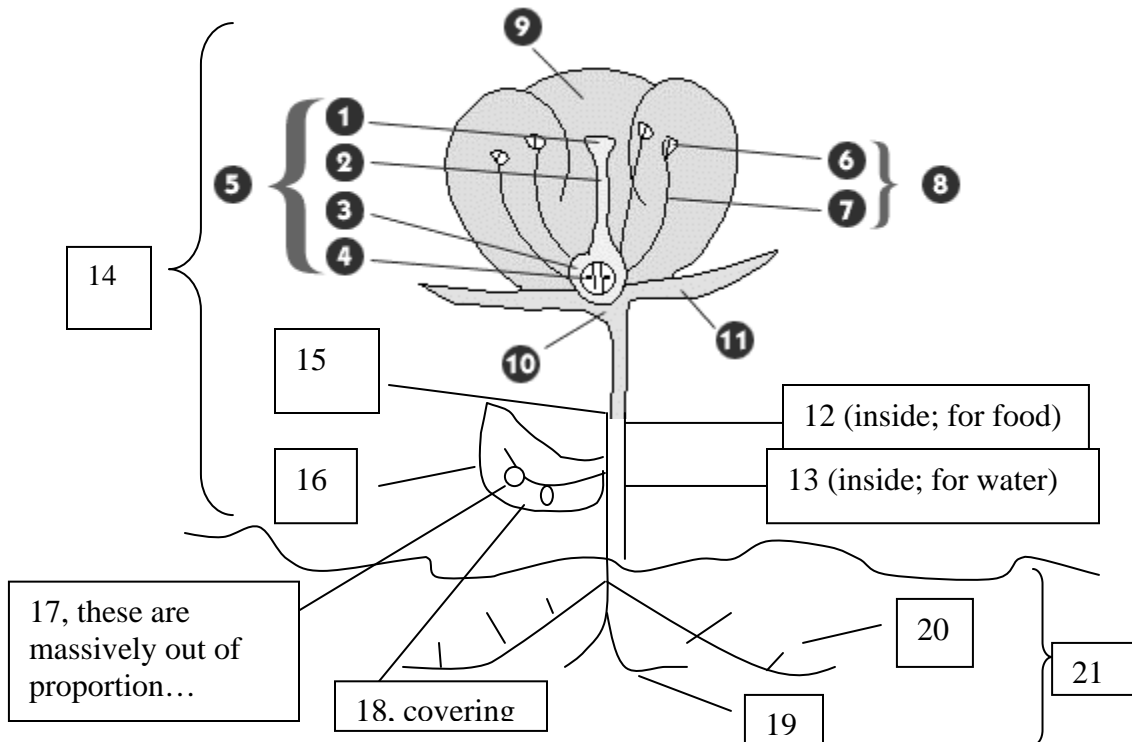
Parts of a Plant Notes Key



Picture modified from <http://www.urbanext.uiuc.edu/gpe/index.html>

1. **__stigma__** - sticky part of the pistil that pollen sticks to
2. **__style__** - long outgrowth of the ovary that collects pollen from the stamens
3. **__ovary__** - base part of the pistil that holds the ovules
4. **__ovule__** - unfertilized seed of the plant
5. **__pistil__** - female part of the flower that contains the stigma, style, ovary and ovules.
6. **__anther__** - part of the flower that holds the pollen
7. **__filament__** - long thread-like part of the flower that holds the anthers out so insects can get to the pollen.
8. **__stamen__** - male part of the flower that contains the anther and the filament.
9. **__petal__** - colorful part of the flower that protects the flower and attracts insects and other pollinators.
10. **__receptacle__** - stalk that bears the flower parts
11. **__sepal__** - part that covers the outside of a flower bud to protect the flower before it opens
12. **__xylem__** - transports water.
13. **__phloem__** - transports food
14. **__stem__** - transport and support for the plant.
15. **__leaf__** - cells of this perform photosynthesis.
16. **__stoma__** - holes in the leaf which allow CO₂ in and O₂ and H₂O out.
17. **__cuticle__** - waxy covering which prevents gas exchange at any place except the stoma.
18. **__shoot system__** - includes the flower, leaves, and stem. It is involved in reproduction, photosynthesis, gas exchange, and transport.
19. **__root hairs__** - increase the surface area of the roots.
20. **__roots__** - anchor the plant and absorb water and nutrients.
21. **__root system__** - includes the roots and root hairs.

Parts of a Plant Practice



Picture modified from <http://www.urbanext.uiuc.edu/gpe/index.html>

Test yourself! Without using your notes, write the **name** of the part described next to the correct letter and then **label** parts of the picture with the letter that describes the function.

- a. transports water.
- b. base part of the pistil that holds the ovules
- c. stalk that bears the flower parts
- d. includes the flower, leaves, and stem. It is involved in reproduction, photosynthesis, gas exchange, and transport.
- e. part that covers the outside of a flower bud to protect the flower before it opens
- f. holes in the leaf which allow CO₂ in and O₂ and H₂O out.
- g. includes the roots and root hairs.
- h. male part of the flower that contains the anther and the filament.
- i. unfertilized seed of the plant
- j. waxy covering which prevents gas exchange at any place except the stoma.
- k. long thread-like part of the flower that holds the anthers out so insects can get to the pollen.
- l. sticky part of the pistil that pollen sticks to
- m. female part of the flower that contains the stigma, style, ovary and ovules.
- n. transport and support for the plant.
- o. cells of this perform photosynthesis.
- p. increase the surface area of the roots.
- q. transports food
- r. colorful part of the flower that protects the flower and attracts insects and other pollinators.
- s. anchor the plant and absorb water and nutrients.
- t. part of the flower that holds the pollen
- u. long outgrowth of the ovary that collects pollen from the stamens

